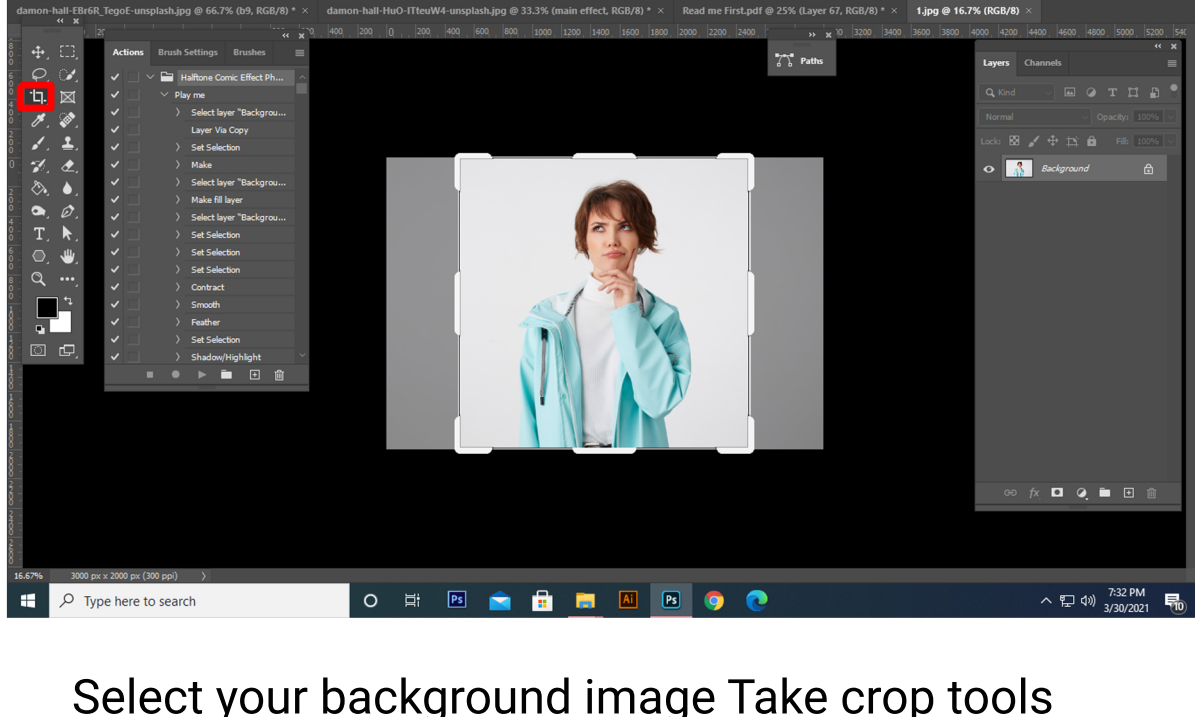


FOR GOOD RESULT :

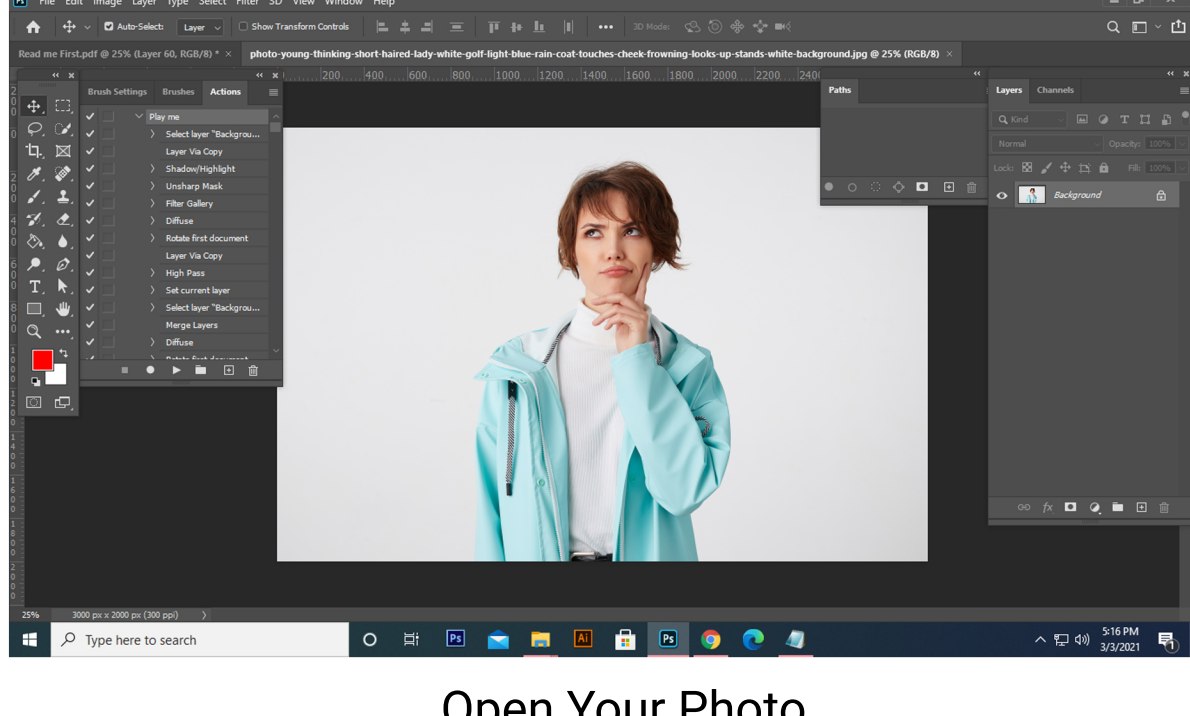
For good result first you need extract your canvas area. Simply select your background image and take crop tools than extension Two side or all side then resize your images 2000x2000 px, dpi 72



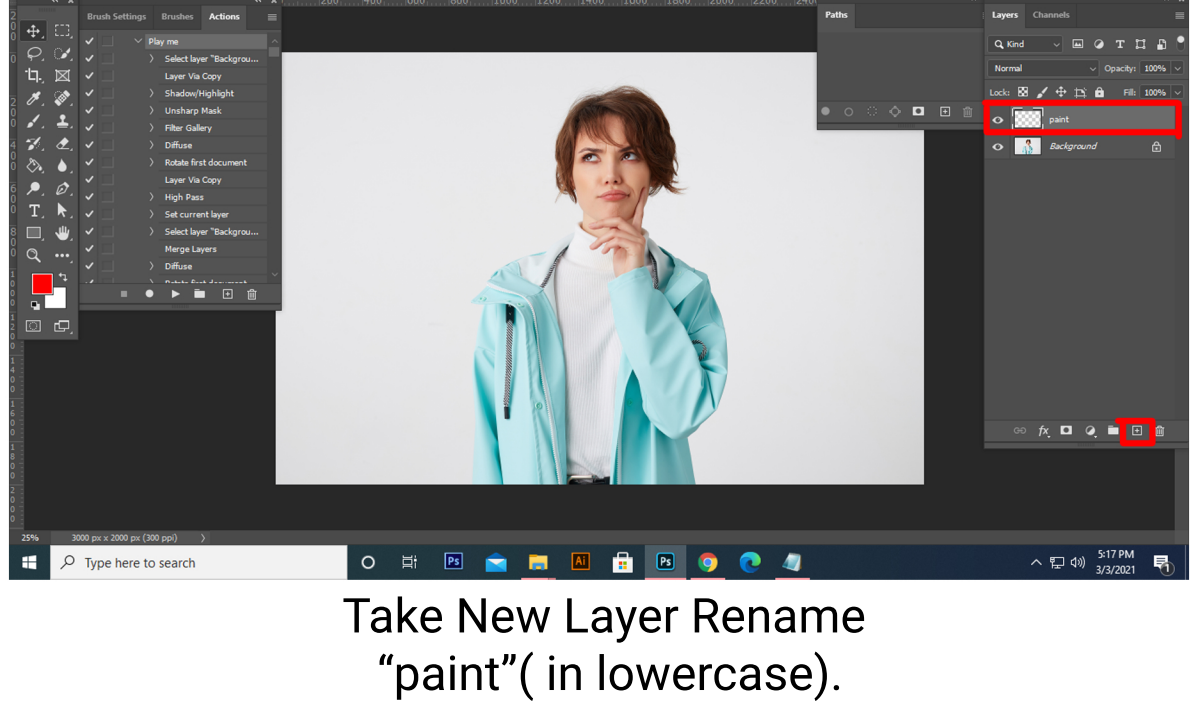
Select your background image Take crop tools than extension two side or all side.

HOW TO Work Action

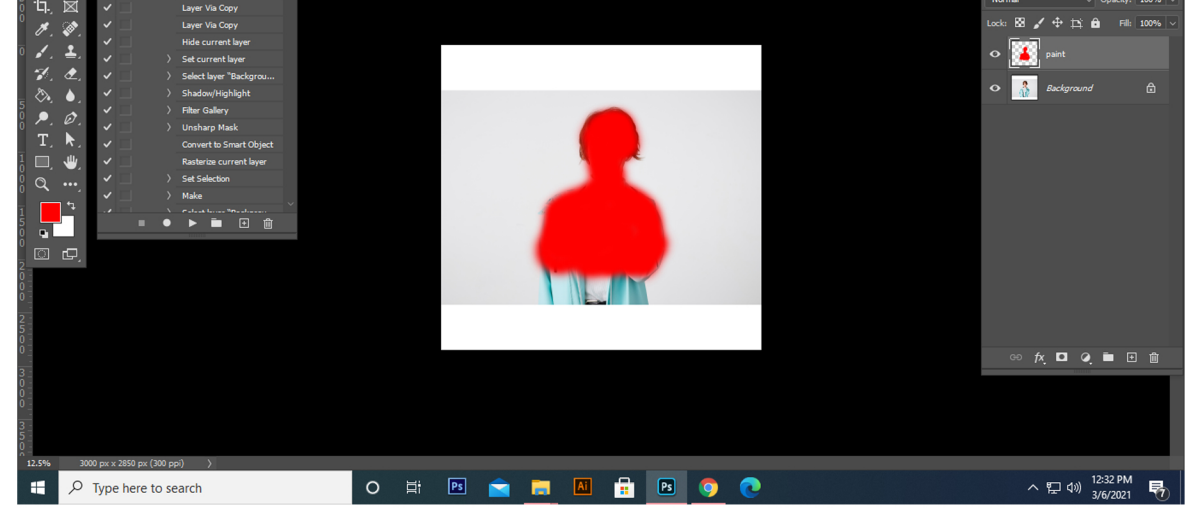
Open your photo take a new layer then rename "paint"(in lowercase).Then select a soft brush and paint your image. Close "paint" layer eye and keep selection "paint" layer Then click action play button.



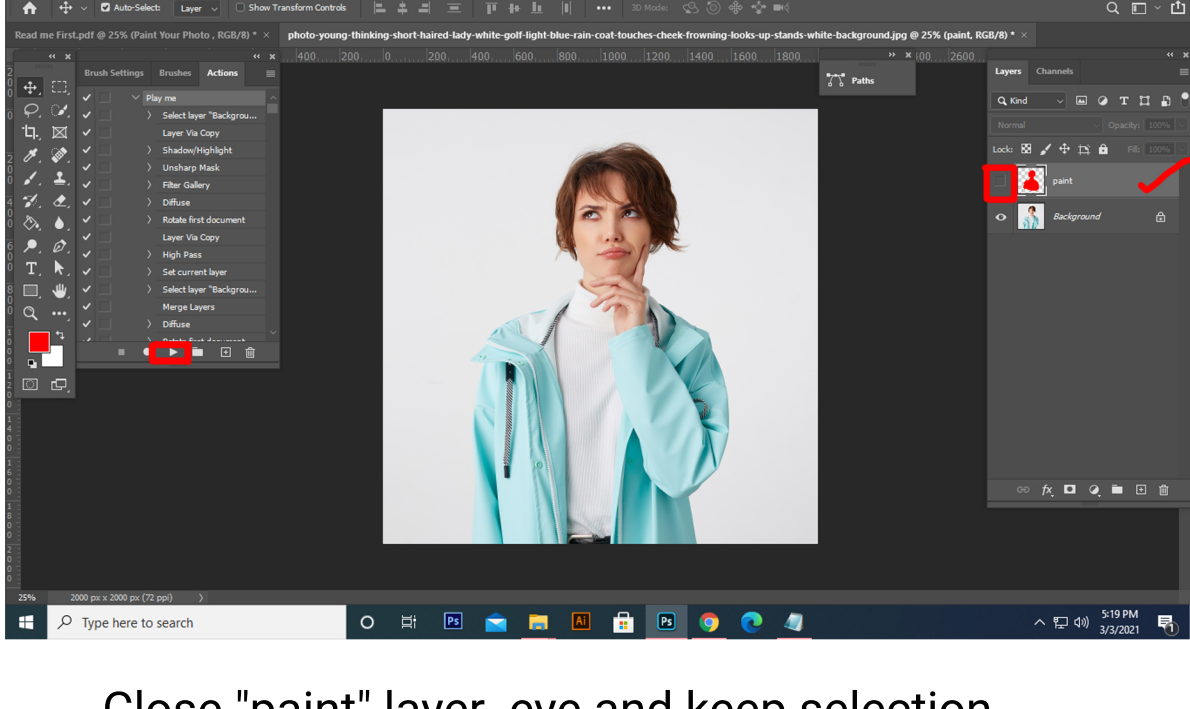
Open Your Photo



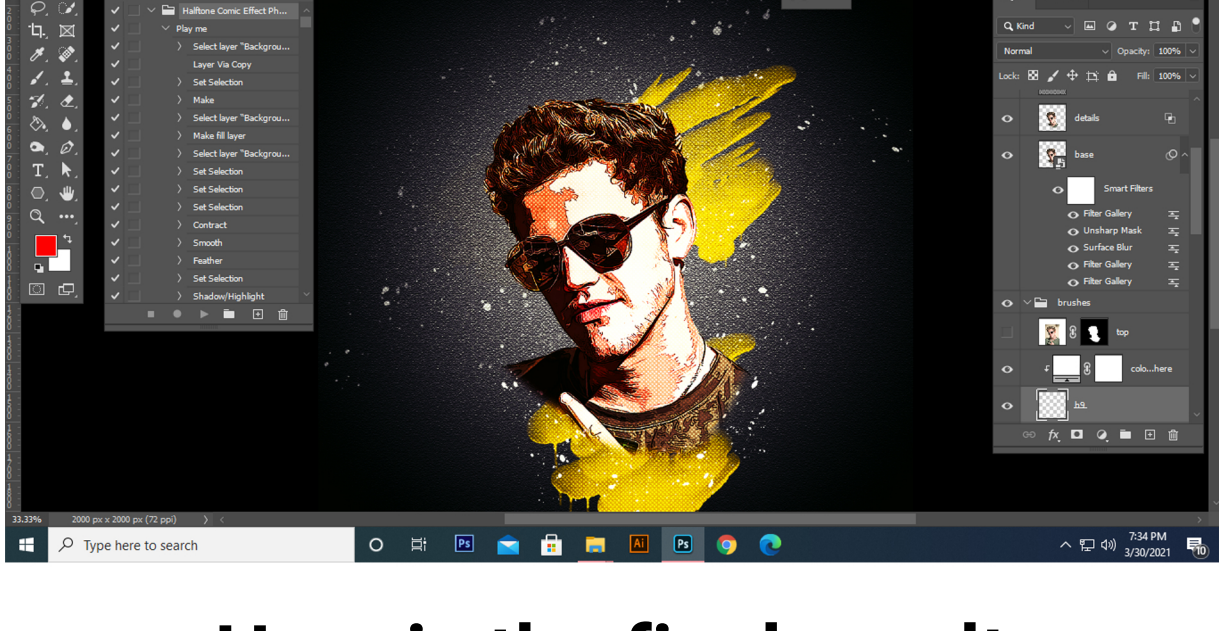
Take New Layer Rename "paint"(in lowercase).



Paint Your Photo



Close "paint" layer eye and keep selection "paint" layer Then click action play button.



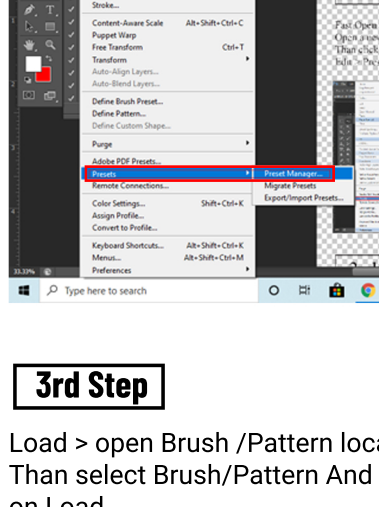
Here is the final result

HOW TO LOAD BRUSH/PATTERN?

1st Step

First open Adobe Photoshop
Open a new page
Than click Edit Menu

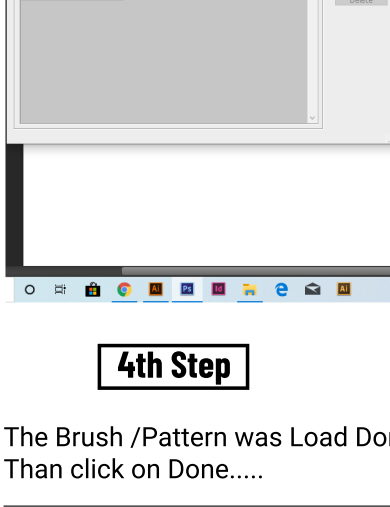
Edit > Presets > PresetsManager



2nd Step

Presets Manager > Presets Type > Brush/Pattern

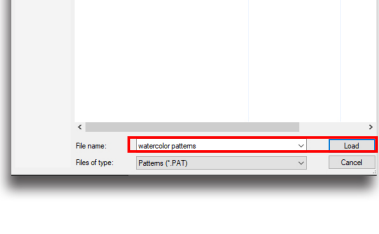
Than click on Load for load Brush/ Pattern



3rd Step

Load > open Brush /Pattern location

Than select Brush/Pattern And click on Load



4th Step

The Brush /Pattern was Load Done

Than click on Done.....

