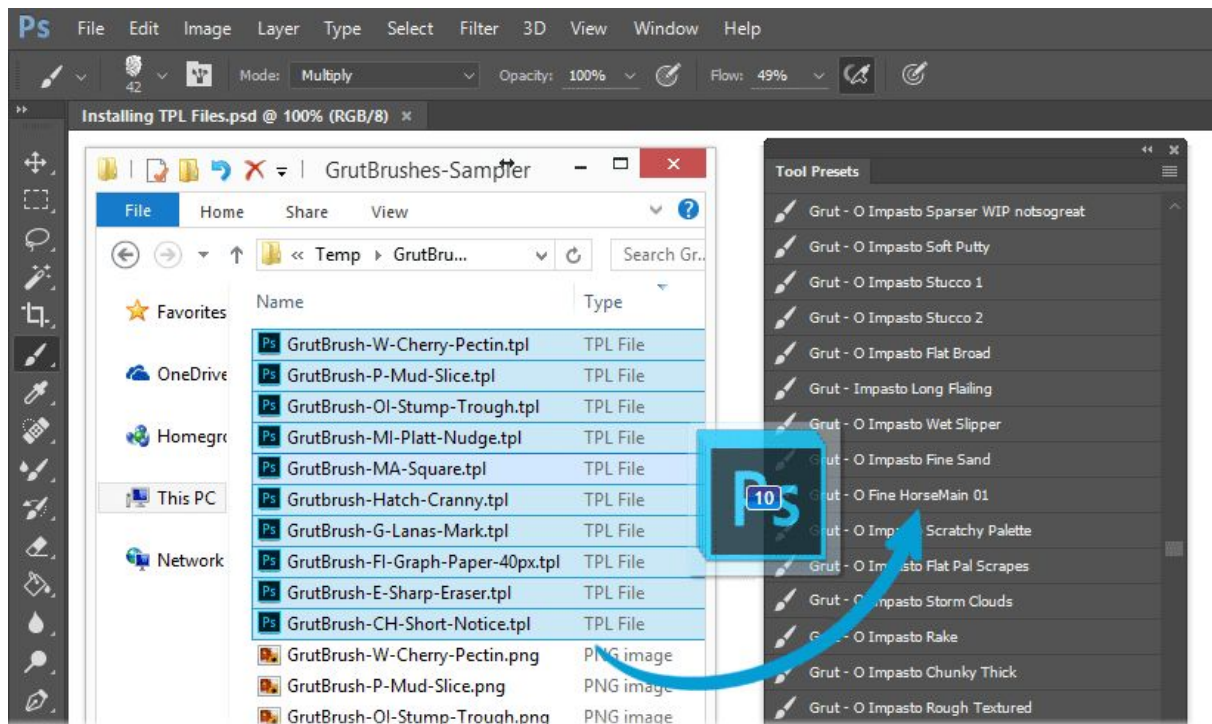
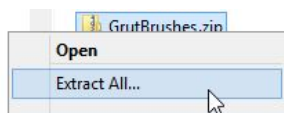


How to Install GrutBrushes TPL brushes



1. Extract/Unzip the .zip file (important! Don't try to drag to install without extracting)



1. Select all the GrutBrushes TPL files (**only** the TPL files) that you want to install and drag and drop them into Photoshop (Tool Presets panel or onto the top menu bar) **not into** a PSD document!)
2. They will appear in the Tool Presets panel (*Window > Tool Presets*) - Not in the Brush panel.

That's it, start Painting!

Alternate methods you can try:

- Drop the TPL files onto the Photoshop app icon on your desktop (pc) or dock (mac)
- Double click on a TPL file and it may install into Photoshop

Don't See your GrutBrushes?

- You will **not** find them in the brushes panel! They are tool presets (tpl) not abr files
- Make sure that 'Current Tool Only' is un-checked at the bottom left of the Tool Presets panel.